

Sect. 15, Twp. 46 S., Rge. 42 E.

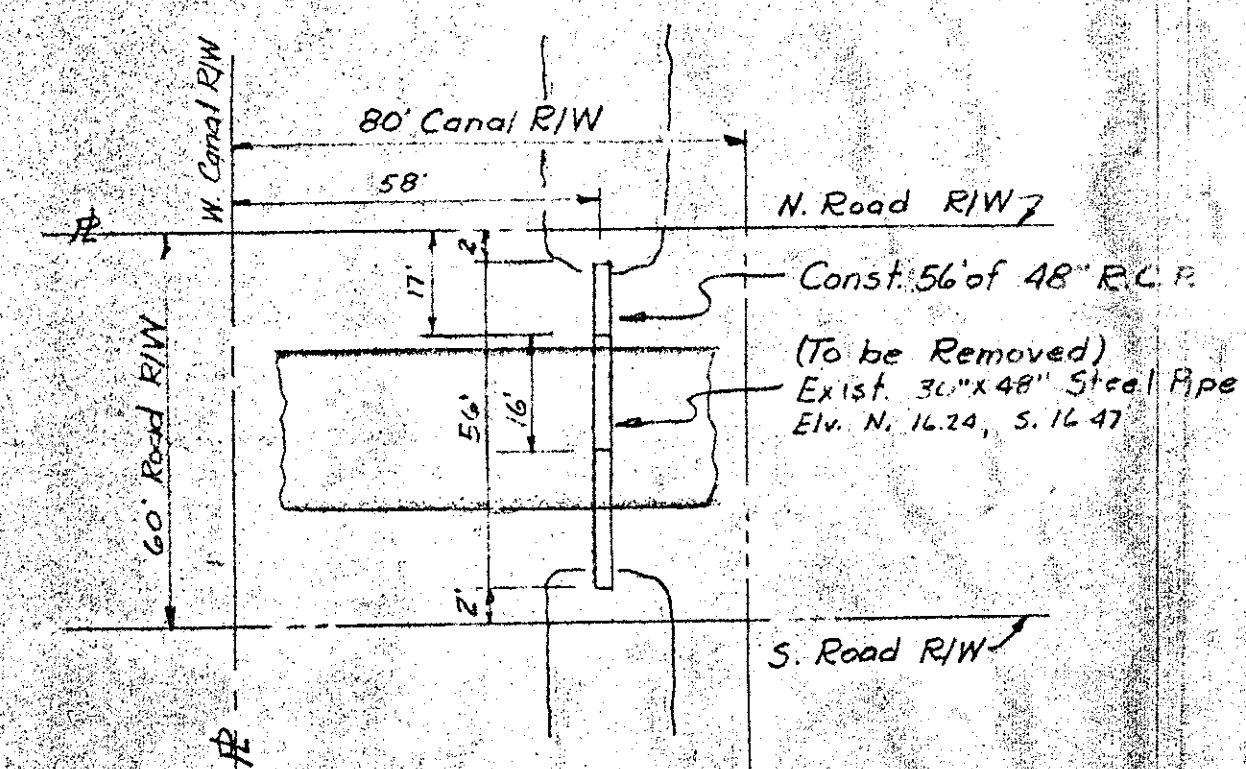
ur0208.igr
ANTIQUERS AERODROME INC 15/46/42

3000-106

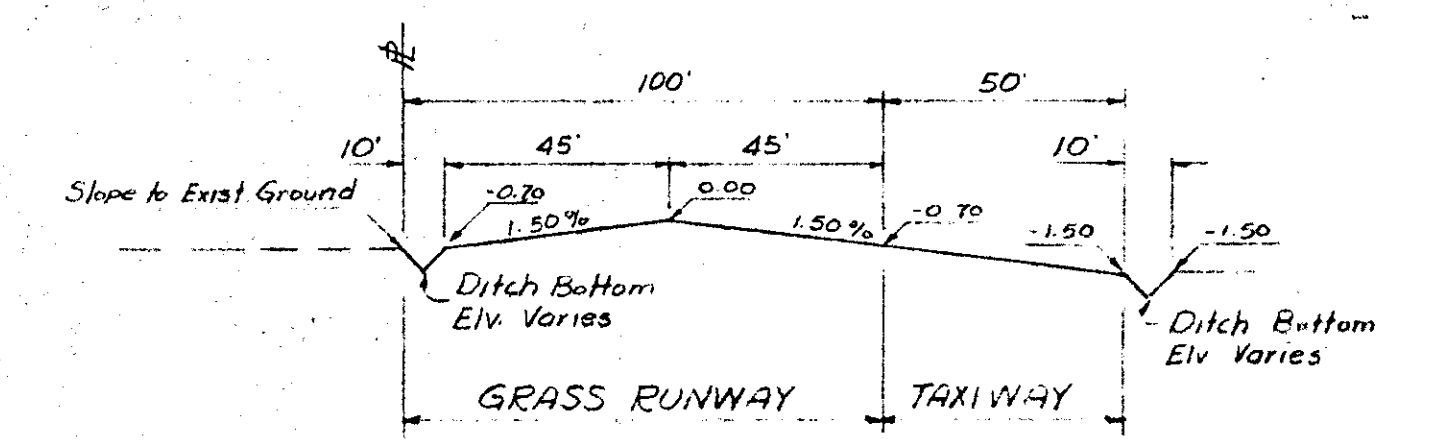
BLOCK-2

Note: For Typical Roadway Section See Sheet

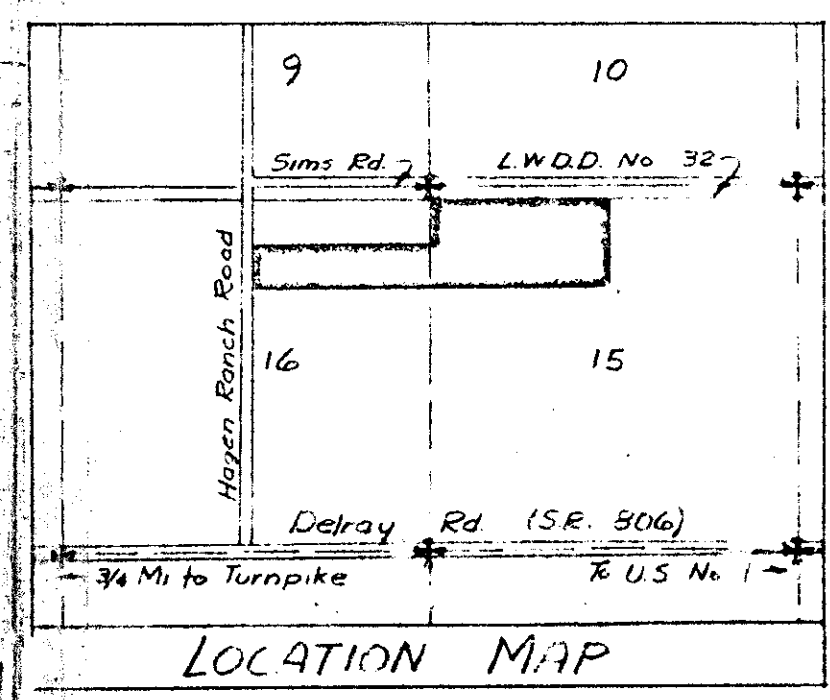
John A. Grant Jr.
9/15/68



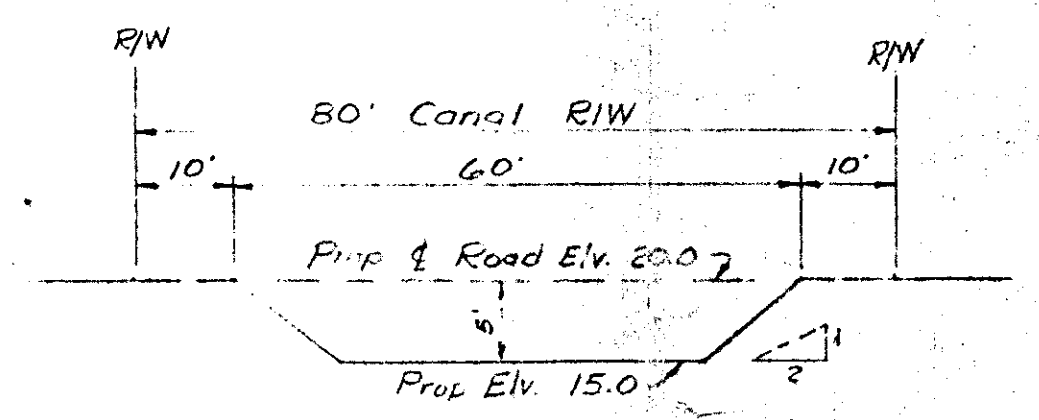
Detail "A"



TYPICAL SECTION RUNWAY AND TAXIWAY
N.T.S.



LOCATION MAP



TYPICAL CANAL SECTION
N.T.S.

NO.	REVISION	DATE	BY
ANTIQUERS AERODROME INC.			
TOPOGRAPHIC SURVEY OF			
N. 1/2 of the N.W. 1/4 of			
Sect. 15, Twp. 46 S., Rge. 42 E.			
JOHN A. GRANT, JR.			
CONSULTING ENGINEERS			
BOCA RATON		FLORIDA	
MADE	DATE	TRACED	DATE
✓	2-15-68	✓	
CHECKED	DATE	SCALE	
✓	2-22-68	1" = 100'	
16-100-642		SHEET	2 OF 6